

Switch Modules Provide High-, Low- or Intermediate-Level Alarms or Control Logic

Switch Logic: With "lead wires up," switch closes on rising level and remains closed until opened by falling level. With "lead wires down," switch opens on rising level and remains open until closed by falling level. Switches mount opposite flags (180°) and can be positioned next to each other for multiple actuation requirements.

Specifications

Switch Length Standard	3-1/2" (88.9 mm)
High Temperature	Approx. 6" (152.4 mm)
Clamp Assembly	Stainless Steel

How To Order

Switch modules can be added to SureSite Indicators at any time. Specify the Part Number and quantity of switches desired.

Standard Switch Modules – SPST, +300°F (148.9°C), Max.

SureSite Indicator Version	Switch Part Number
Alloy – Standard Size	86435 ⚡
Alloy – Miniature Size	86567 ⚡
Engineered Plastics	80469

High Temperature Switch Modules – All SureSite Indicator Versions, +750°F (399°C), Max.

SureSite Indicator Version	Switch Part Number
SPST, 20 VA	83150
SPDT, 20 VA	84320

Explosion-Proof Switches – All SureSite Indicator Versions, +750°F (399°C), Max.

FM - Class I, Division 1, Groups B, C, D
CSA - Class I, Divisions 1, 2, Groups B, C, D

Switch Description	Switch Part Number
SPST-20 VA	83130
SPDT-20 VA	84330
DPDT-10 A, 24 VDC	83110
DPDT-10 A, 120 VAC	83100

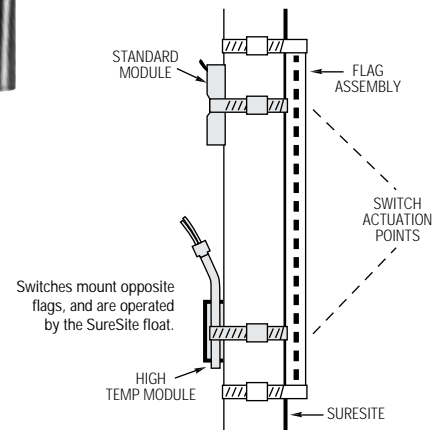
Standard Switch Modules

- CSA Approved
- Includes Mounting Clamp
- Polysulfone Housing
- Withstands Temperatures to 300°F (148.9°C)
- Connection: 1/4" FNPT



High Temperature Switch Module

- UL, CSA, FM-Explosion-Proof Model Available
- Used with High Temp Standard Size SureSite Indicators
- Withstands Temperatures of 750°F (399°C)
- Stainless Steel Construction
- 1/2" MNPT Conn.



For Intrinsic Safety... These switch modules can be rendered intrinsically safe with the use of GEMS SAFE-PAKS™ and Zener Barriers. See section N.

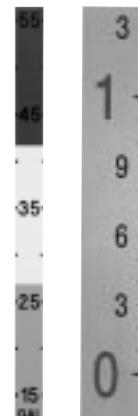
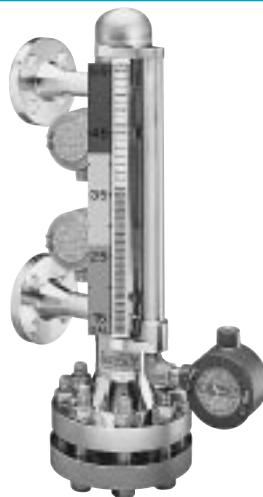
Indicating Scale Adds a Numerical Readout of Liquid Level

These optional stainless steel scales provide a numerical readout of liquid level in addition to flag indication. They mount alongside the flag assembly with special "windowed" clamps that minimize flag view obstruction. Available graduated in inches and feet; decimeters, centimeters, millimeters; or with custom scale graduations.

How To Order

Supply the following information for each scale ordered:

- Indicating Length
- Inch and feet; decimeters, centimeters, millimeters; unmarked or custom markings
- SureSite model receiving the scale
- Custom marked scales will require additional application information.



Available with standard "Inch and Feet," "metric" markings...or custom scale graduations.

Optional Continuous Electrical Output Transmitters for *all* SureSite Indicators

These Transmitters broaden the capabilities of SureSite Indicators. They operate in addition to the visual flags and provide a continuous output to remote receivers, recorders and controllers. They are compatible with all GEMS receivers in this catalog, or can interface directly with user's instrumentation when equipped with a signal conditioner.



Operation is intrinsically safe when transmitters are properly connected with a GEMS, or other appropriate, zener barrier in Section N.

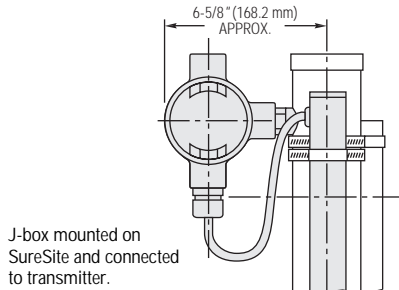
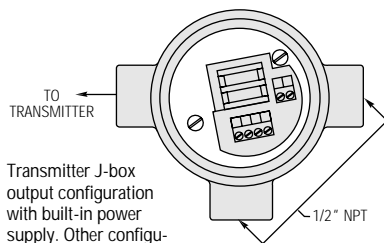
Specifications

Operating Temperature	
Low Temperature Transmitters	+300°F (148.9°C)
High Temperature Transmitters	+750°F (399°C)
Housing Materials	
Low Temperature Transmitters	Polysulfone
High Temperature Transmitters	Stainless Steel
Transmitter Resolution	3/8" (9.5 mm)
Accuracy	3/8" (9.5 mm)
Output Termination	
Low Temperature Transmitters	Cable
High Temperature Transmitters	Junction Box

*Consult factory for higher temperatures.

Signal Conditioned Modules

GEMS offers a variety of electrical Junction Boxes with built-in Signal Conditioners to increase the versatility of SureSite Indicators. Electrical specifications and ordering information for these units is found on Page H-15. Junction boxes with terminal blocks are in Section N.



Note: This mounting for low temperature transmitter. Mounting is different for explosion-proof and high temperature transmitters.

How To Order

1. Specify basic transmitter version.

Version
Low Temperature Transmitter 300°F (148.9°C)
High Temperature Transmitter 750°F (399°C)
Explosion-Proof Transmitter 750°F (399°C)* FM - Class I, Division 1, Groups B, C, D CSA - Class I, Divisions 1, 2, Groups B, C, D UL - Class I, Divisions 2, Groups A, B, C, D

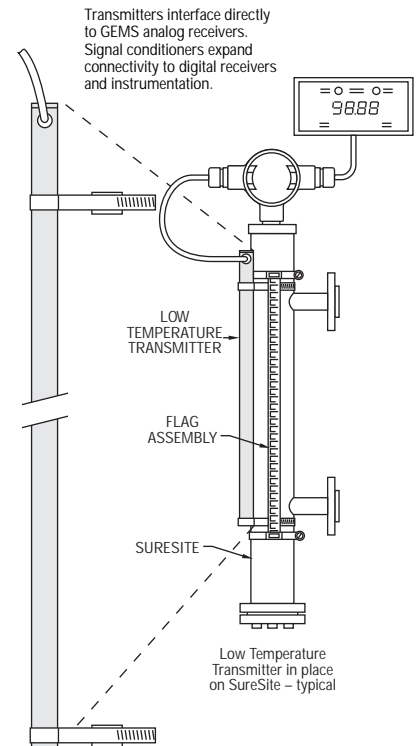
* Junction Box terminated or 4-20 mA output available.

2. Specify Indicating Length (L).

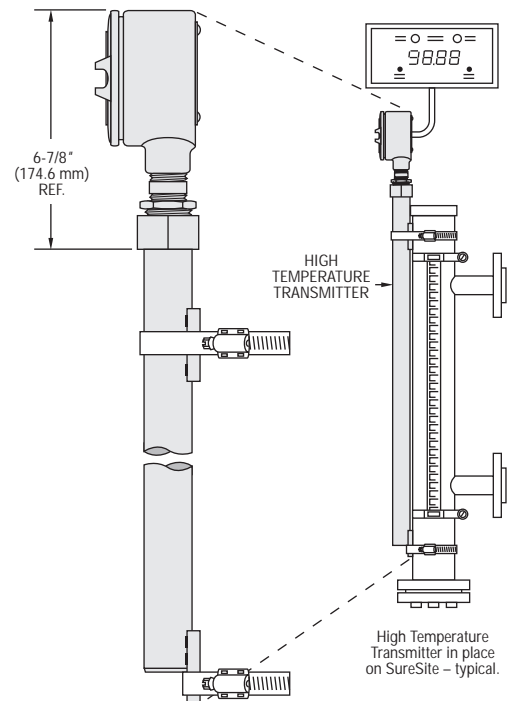
3. Specify Output:

- a. Terminal Strip
- b. 0-5 VDC
- c. 0-12 VDC
- d. 4-20 mA.

Low Temperature Version



Typical High Temperature or Explosion-Proof Versions



Note: High temperature/Explosion-Proof Transmitters may extend overall length of the SureSite Visual Indicator.