

# MAGNETIC

## GAUGE & GAUGE+SWITCH

Designed to measure differential pressure as low as 15 mm of water.

**MAGNETIC** instrument is designed for use in air handling units, pharmaceutical and medical equipments & HVAC. It also finds applications in level, flow & filter resistance measurement. It is compact, lightweight, reliable and most important, affordable.

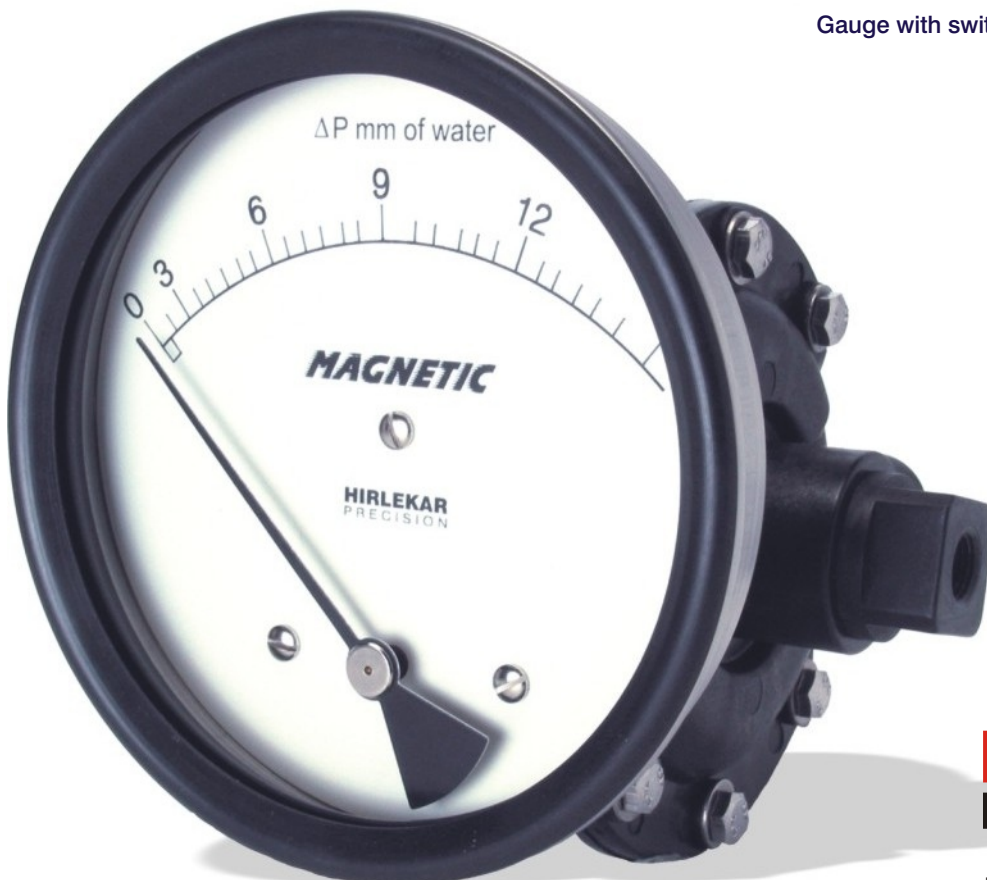
**MAGNETIC** is a quality diaphragm instrument. It's engineering polymer body with a stainless steel case and vibration resistant design, makes it rugged. This instrument is suitable for air and other non corrosive gases & fluids. Its strong magnetic coupling provides consistent performance and smooth pointer movement.

**MAGNETIC** has a DP range from 15 to 1000 mm of water. It has in-line as well as back porting. This instrument is available with a switch. A gauge can also be easily upgraded by adding a switch later by the user.

OEMs can order instruments with their logo on dial.



Gauge with switch



Reliable

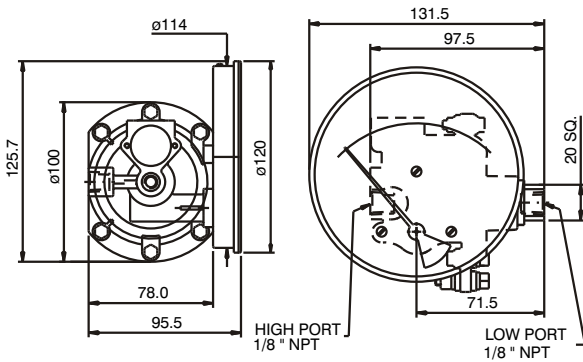
Smooth pointer motion.

Switch can be added anytime.

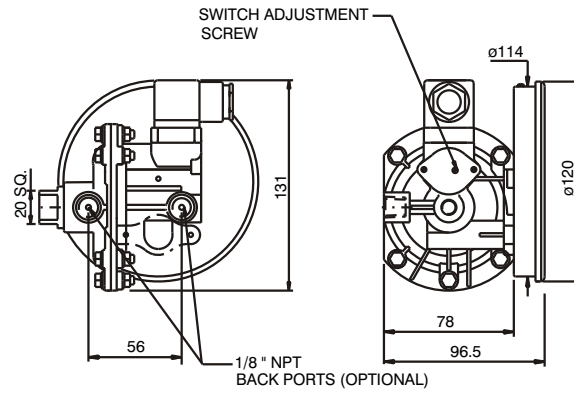
**HIRLEKAR**  
**PRECISION**

ISO 9002 Certified

## STANDARD DIMENSIONS

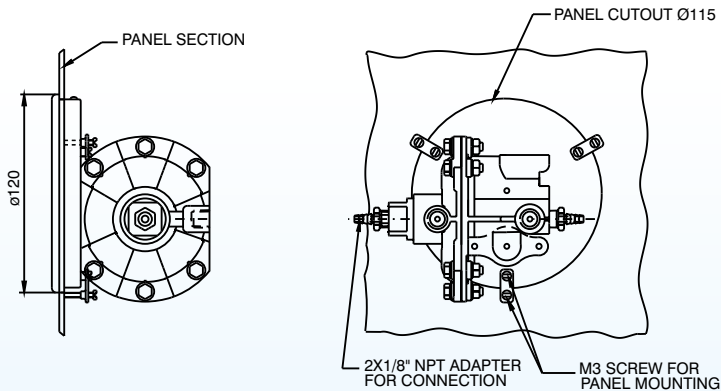


## GAUGE+SWITCH WITH REED CONTACTS WITH A DIN PLUG

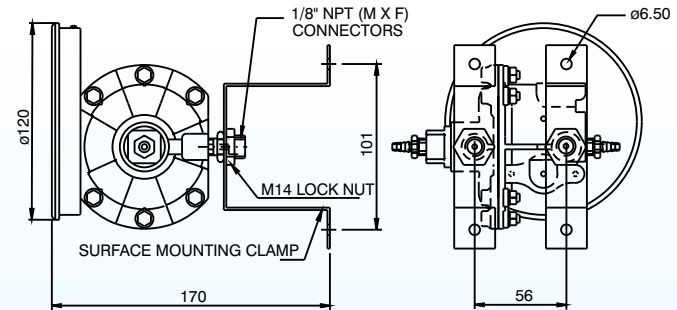


This instrument with its off-center profile can still be easily inserted in a 115 mm panel cutout.

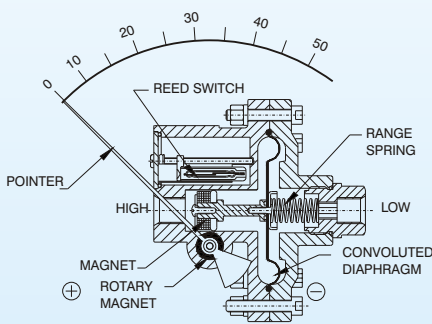
## FLUSH MOUNTING DETAILS



## SURFACE MOUNTING DETAILS



## OPERATING PRINCIPLE :



High and Low pressures are separated by a sensor assembly consisting of a magnet, diaphragm and a range spring. The difference in pressure causes the assembly to move in proportion to the change against the range spring.

A rotary magnet, located in a separate body compartment and isolated from the acting pressures, is rotated by magnetic coupling as per the linear movement of the sensor assembly. A pointer attached to the rotary magnet indicates differential pressure on the dial.

## APPLICATIONS :

- Monitor air-handling units.
- Measurement of fan & blower pressure.
- Monitor condition of the filter on laminar flow devices.
- Pressure drop across filters.
- Pressure drops across orifice plate for flow determination.
- Level measurement.
- Spinning machines.

## Points to cover in your enquiry.

- Operating pressure.
- Operating temperature.
- Porting.
- Mounting.
- Application in brief.
- Customer logo.

## STANDARD ACCESSORIES :

1. Two brass adaptors for tube connection to in-line or back ports.
2. Flush mounting kit.
3. Two plugs for sealing the port holes (in-line or back) when not in use.

## SPECIFICATIONS :

- Body materials : Engineering polymer.
- Protection : IP 65 gauge & switch.
- Working pressure : 35 psi / 2.4 bar.
- Working temp. : 60°C / 140°F Max.
- Differential range : 15 mm to 1000mmWc
- Seals : Buna-N, Silicone.
- Porting : In-line or back (user to select).
- Dial size : 112mm.
- Connections : 1/8" NPT (F).
- Switch : Up to 2 independently adjustable, factory set SPSTs or 1 SPDT reed switch.
- Weight : 400gms (approx.)
- Accuracy : +/- 3% of FSR (Ascending).
- First marking : At 15% of the FSR.

## OPTIONS :

1. Colour band/zone.
2. Customer logo.
3. Dual scale.
4. Units other than mm/Inch of water.

## STANDARD MODELS :

Sr. no.	Ordering code.	Range	Least count
1	Magnetic 600 G 0 - 15mmw	0 - 15mm of water	0.5 mm water
2	Magnetic 600 G 0 - 25mmw	0 - 25mm of water	1.0 mm water
3	Magnetic 600 G 0 - 50mmw	0 - 50mm of water	2.0 mm water
4	Magnetic 600 G 0 - 100mmw	0 - 100mm of water	5.0 mm water
5	Magnetic 600 G 0 - 150mmw	0 - 150mm of water	5.0 mm water
6	Magnetic 600 G 0 - 250mmw	0 - 250mm of water	10.0 mm water

Other ranges, units and options are manufactured on request.

Specifications are subject to change without prior notice and any obligation on the part of the manufacturer.

**Hirlekar Precision Engineering Pvt. Ltd.**  
67 Industrial T.P. Scheme II,  
Ramtekadi, Pune 411 013, INDIA  
Tel. : +91-20-26823648  
Fax: +91-20-26871153  
E-mail: hirlekar@vsnl.com  
www.hirlekarprecision.com