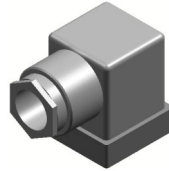


ACCESSORIES / OPTIONS

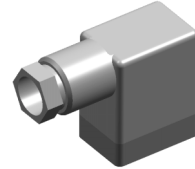
Dial case with follower
Pointer



DIN plug with 2 poles &
Earth for SPST switches



DIN plug with 3 poles &
earth for SPST or SPDT
switches



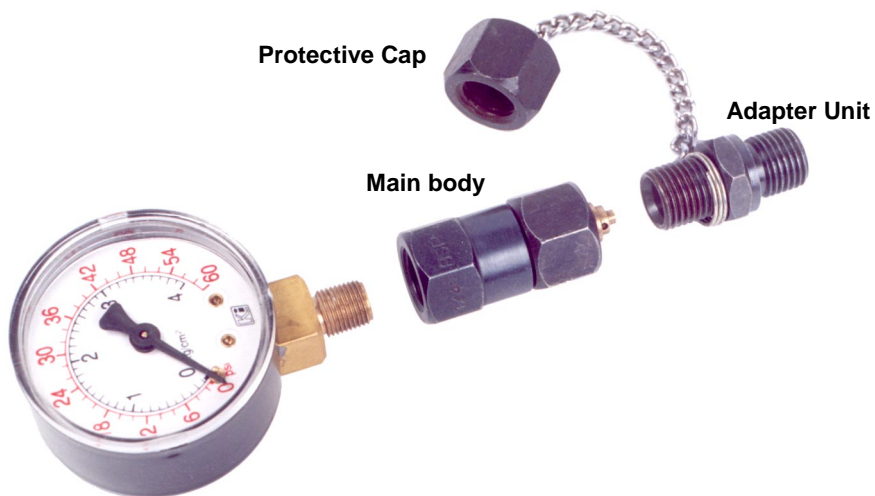
Universal Pulsation
Dampner (Snubber)



Gauge and system
protector



Pressure gauge Adapter



For selection please refer to accessories catalogue.